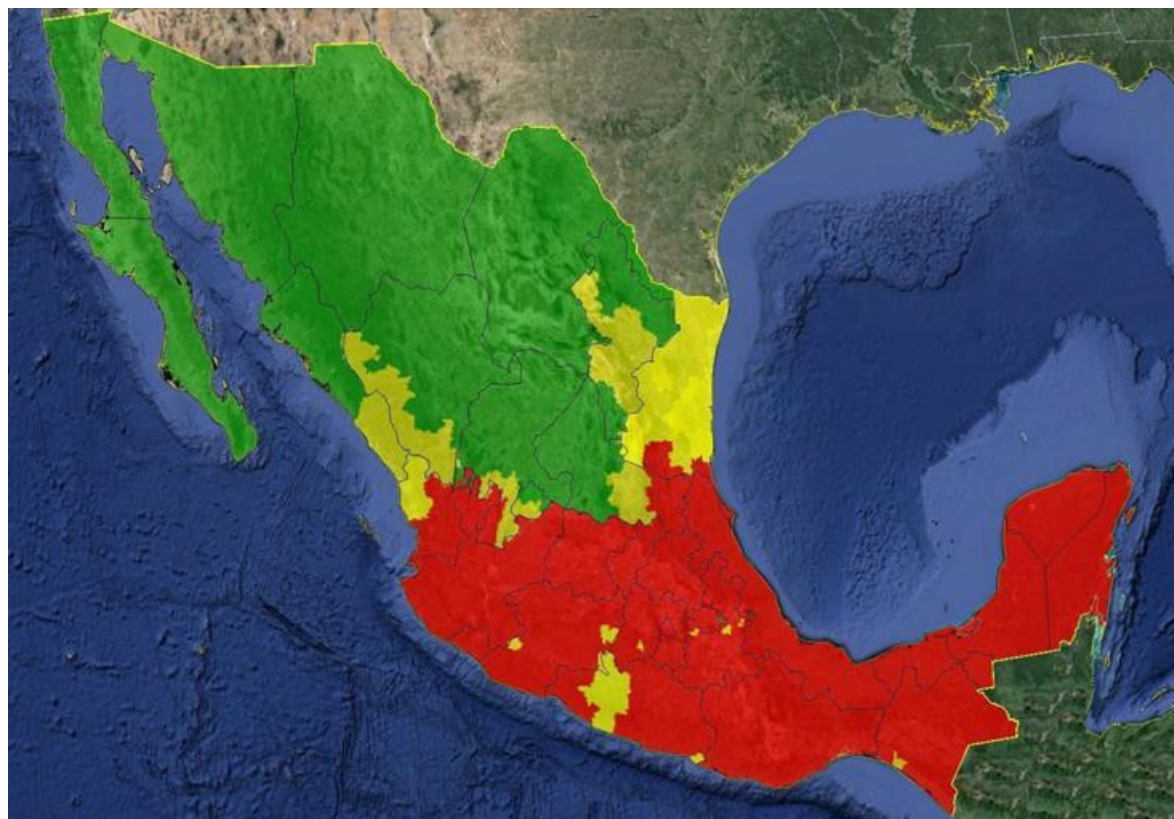


Informe Semanal de la Situación Actual de Moscas de la Fruta y Actividades Realizadas en la Zona de Trabajo JLSV Villa Comaltitlan, Chiapas.

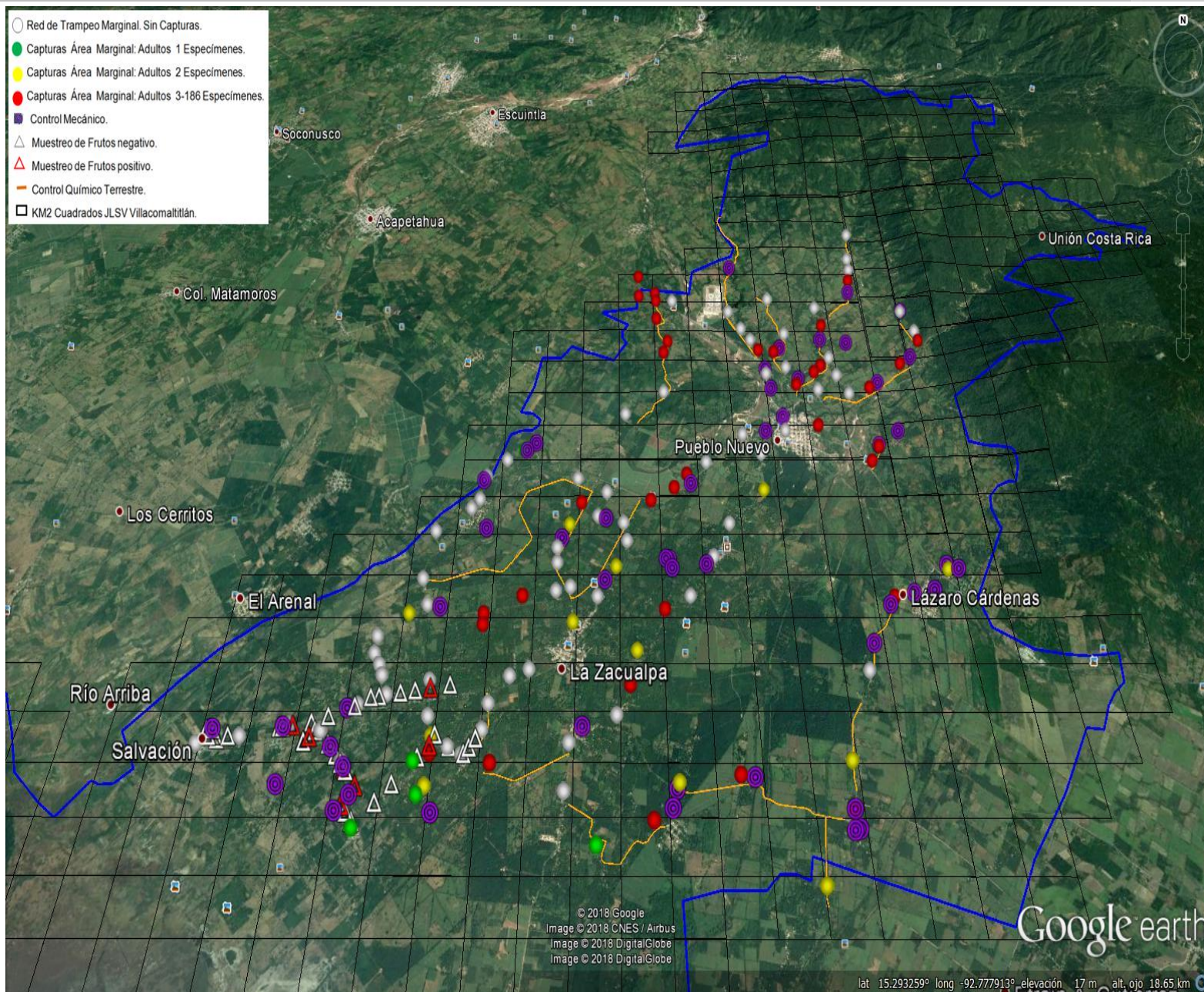


SEMANA 23/2018



DISTRIBUCION ESPACIAL DE LA PLAGA

- Red de Trampeo Marginal. Sin Capturas.
- Capturas Área Marginal: Adultos 1 Especímenes.
- Capturas Área Marginal: Adultos 2 Especímenes.
- Capturas Área Marginal: Adultos 3-186 Especímenes.
- Control Mecánico.
- △ Muestreo de Frutos negativo.
- △ Muestreo de Frutos positivo.
- Control Químico Terrestre.
- KM2 Cuadrados JLSV Villacomaltitlán.

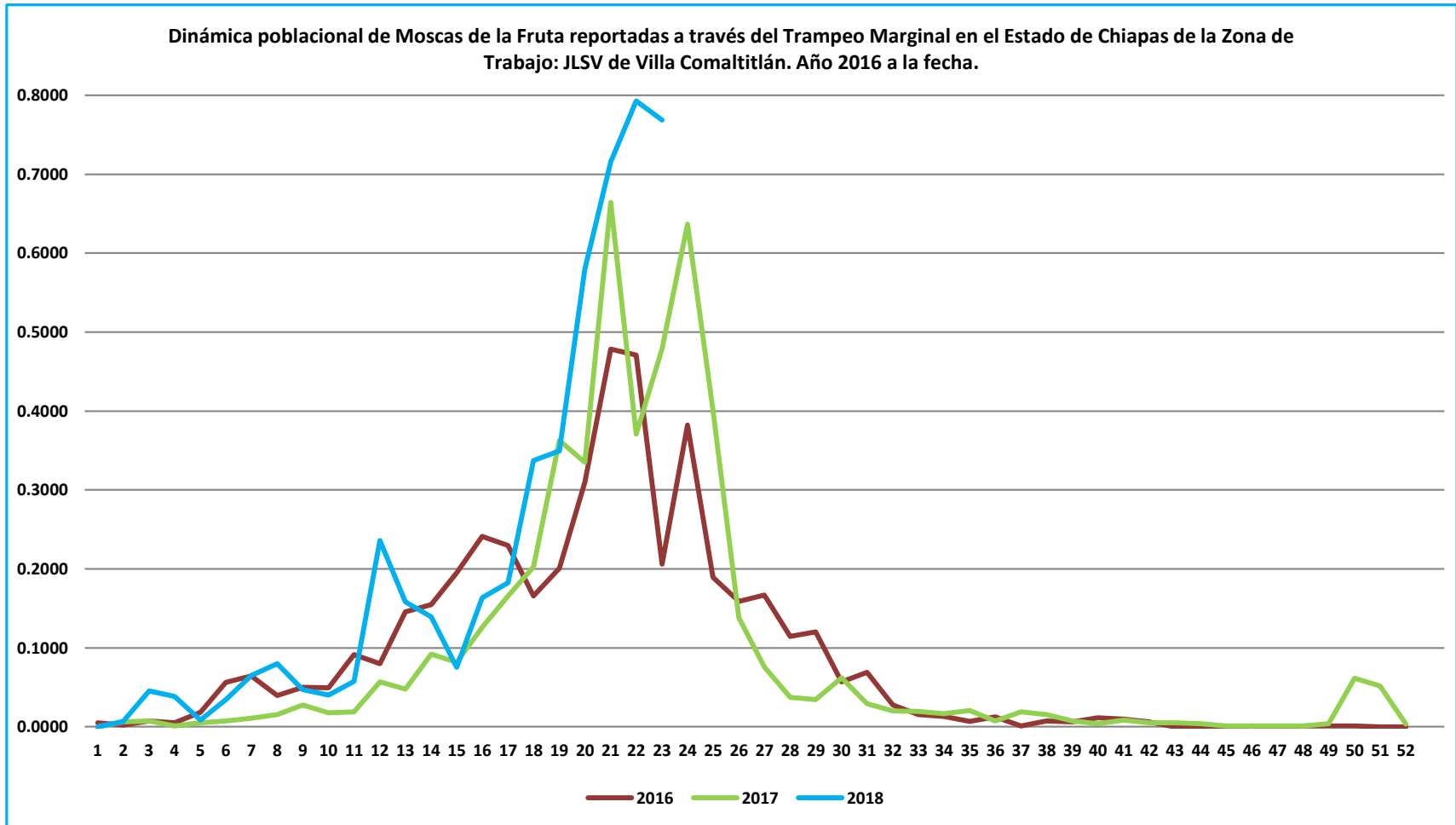


MTD	Marginal
<i>A. ludens</i>	0.0100
<i>A. obliqua</i>	0.7496
<i>A. striata</i>	0.0037
<i>A. serpentina</i>	0.0050

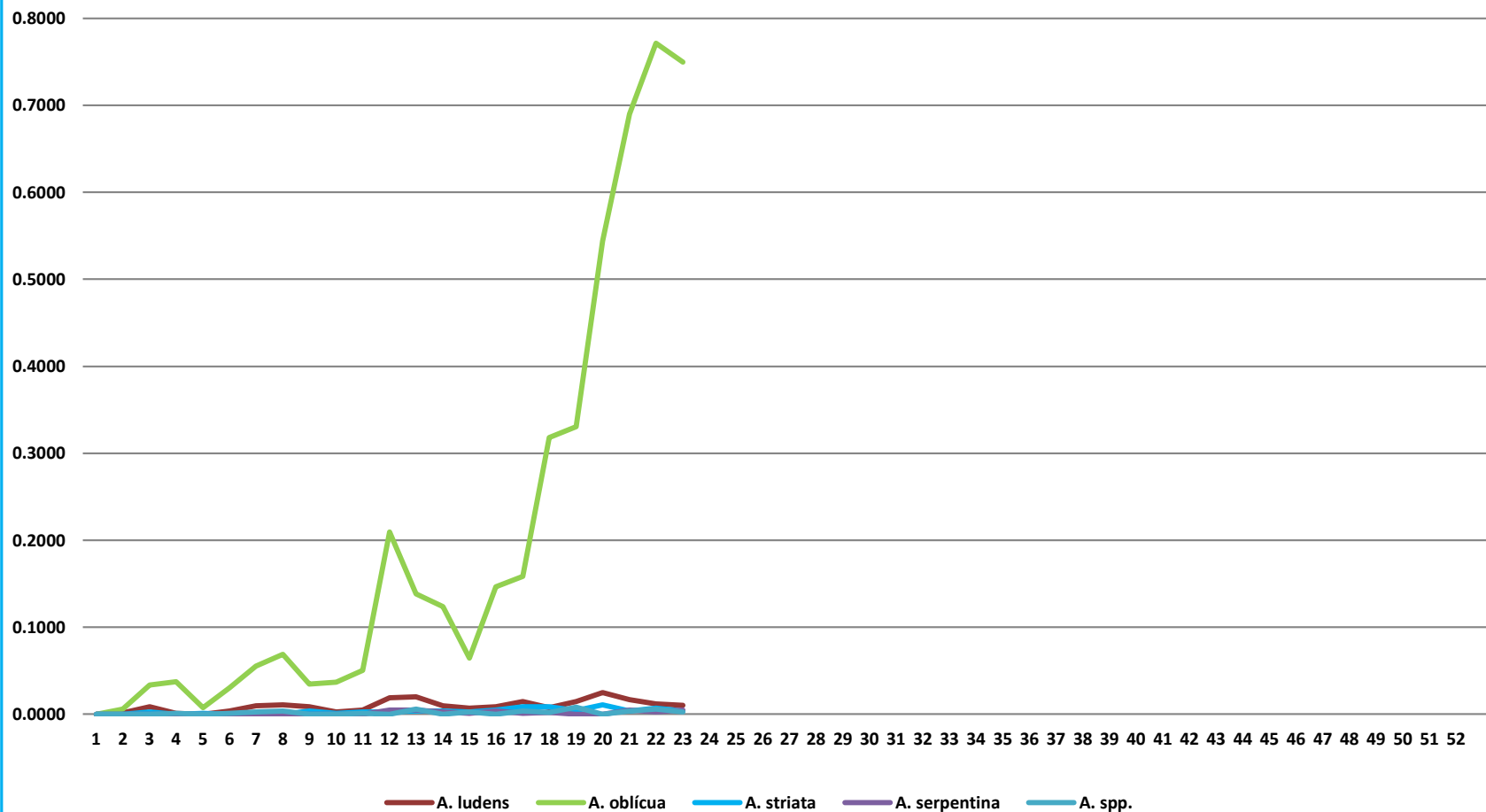
© 2018 Google
 Image © 2018 CNES / Airbus
 Image © 2018 DigitalGlobe
 Image © 2018 DigitalGlobe

Google earth

lat 15.293259° long -92.777913° elevación 17 m alt. ojo 18.65 km



Dinámica poblacional de Moscas de la Fruta reportadas a través del Trampeo Marginal en el Estado de Chiapas de la Zona de Trabajo: JLSV de Villacomaltitlán. Año 2018 a la fecha.



Muestreo de Frutos Larvas /KG						Larvas /Kg
Semanas	KG	Larvas <i>ludens</i>	Larvas <i>obliqua</i>	Larvas <i>seppentina</i>	Larvas <i>striata</i>	
1	29.12	0.00	0.00	0.00	7.00	0.24
2	68.80	0.00	0.00	6.00	9.00	0.22
3	58.10	0.00	0.00	0.00	12.00	0.21
4	64.50	0.00	0.00	8.00	19.00	0.42
5	61.70	0.00	0.00	0.00	12.00	0.19
6	64.40	0.00	11.00	5.00	12.00	0.43
7	60.20	0.00	22.00	0.00	15.00	0.61
8	56.00	0.00	39.00	7.00	16.00	1.11
9	71.90	0.00	75.00	0.00	9.00	1.17
10	28.50	0.00	23.00	0.00	8.00	1.09
11	65.10	0.00	71.00	0.00	13.00	1.29
12	62.00	0.00	51.00	0.00	25.00	1.23
13	0.00	0.00	0.00	0.00	0.00	0.00
14	72.30	0.00	118.00	0.00	13.00	1.81
15	65.10	0.00	33.00	0.00	21.00	0.83
16	61.50	2.00	42.00	0.00	25.00	1.12
17	68.40	1.00	41.00	0.00	25.00	0.98
18	42.00	0.00	28.00	0.00	15.00	1.02
19	90.00	0.00	53.00	0.00	23.00	0.84
20	80.90	0.00	52.00	0.00	21.00	0.90
21	110.80	0.00	33.00	0.00	38.00	0.64
22	53.70	0.00	24.00	0.00	14.00	0.71
23	95.60	0.00	30.00	0.00	28.00	0.61

JLSV de Villacomaltitlan					
Semana	Control Químico Terrestre		Control Químico Aéreo		Total (Has)
	Has	Lts.	Has.	Lts.	
1	120.00	1,200.00	0.00	0.00	120.00
2	150.00	1,500.00	0.00	0.00	150.00
3	150.00	1,500.00	0.00	0.00	150.00
4	150.00	1,500.00	0.00	0.00	150.00
5	150.00	1,500.00	0.00	0.00	150.00
6	150.00	1,500.00	0.00	0.00	150.00
7	150.00	1,500.00	0.00	0.00	150.00
8	150.00	1,500.00	0.00	0.00	150.00
9	150.00	1,500.00	0.00	0.00	150.00
10	300.00	3,000.00	0.00	0.00	300.00
11	300.00	3,000.00	0.00	0.00	300.00
12	300.00	3,000.00	0.00	0.00	300.00
13	180.00	1,800.00	0.00	0.00	180.00
14	375.00	3,750.00	0.00	0.00	375.00
15	375.00	3,750.00	0.00	0.00	375.00
16	375.00	3,750.00	0.00	0.00	375.00
17	375.00	3,750.00	0.00	0.00	375.00
18	300.00	3,000.00	0.00	0.00	300.00
19	250.00	2,500.00	0.00	0.00	250.00
20	250.00	2,500.00	0.00	0.00	250.00
21	250.00	2,500.00	0.00	0.00	250.00
22	250.00	2,500.00	0.00	0.00	250.00
23	200.00	2,000.00	0.00	0.00	200.00

JLSV de Villacomaltitlan		
Semana	Estaciones Cebo	
	Instaladas	Recebadas
1	40	28
2	50	34
3	50	50
4	50	50
5	50	50
6	50	50
7	50	50
8	50	50
9	50	50
10	60	60
11	60	60
12	60	60
13	36	36
14	75	75
15	75	75
16	75	75
17	75	75
18	60	60
19	50	50
20	50	50
21	50	50
22	50	50
23	40	40

Control Mecánico (KG)													Total
Semanas	Jobo de Pava	Carambola	Naranja Dulce	Naranja Agria	Guayaba	Mandarina	Pomelo	Toronja	Mango	Caimito	Chicozapote	Zapote	
1	0.00	0.00	0.00	1,700.00	84.00	35.00	385.00	20.00	0.00	0.00	10.00	25.00	2,259.00
2	0.00	0.00	0.00	2,155.00	80.00	10.00	410.00	385.00	0.00	0.00	15.00	0.00	3,055.00
3	0.00	0.00	0.00	2,035.00	99.00	35.00	460.00	25.00	140.00	0.00	22.00	30.00	2,846.00
4	0.00	0.00	0.00	1,875.00	101.00	40.00	295.00	35.00	125.00	0.00	30.00	35.00	2,536.00
5	0.00	0.00	0.00	2,215.00	106.00	15.00	205.00	0.00	210.00	0.00	30.00	0.00	2,781.00
6	0.00	0.00	0.00	1,275.00	97.00	0.00	100.00	0.00	1,010.00	0.00	10.00	0.00	2,492.00
7	0.00	0.00	0.00	1,100.00	61.00	0.00	250.00	0.00	1,335.00	0.00	15.00	0.00	2,761.00
8	0.00	0.00	0.00	970.00	90.00	10.00	110.00	0.00	2,130.00	15.00	10.00	0.00	3,335.00
9	0.00	0.00	0.00	740.00	119.00	10.00	70.00	0.00	3,335.00	0.00	10.00	0.00	4,284.00
10	0.00	0.00	0.00	660.00	77.00	0.00	95.00	0.00	3,980.00	0.00	15.00	0.00	4,827.00
11	0.00	0.00	0.00	460.00	65.00	0.00	55.00	0.00	5,075.00	0.00	10.00	0.00	5,665.00
12	0.00	0.00	0.00	475.00	36.00	0.00	0.00	0.00	6,370.00	0.00	0.00	0.00	6,881.00
13	0.00	0.00	0.00	115.00	11.00	0.00	0.00	0.00	4,255.00	0.00	0.00	0.00	4,381.00
14	0.00	0.00	0.00	80.00	0.00	0.00	0.00	0.00	7,555.00	0.00	0.00	0.00	7,635.00
15	0.00	0.00	0.00	0.00	0.00	0.00	0.00	0.00	9,747.00	0.00	0.00	0.00	9,747.00
16	0.00	0.00	0.00	160.00	45.00	0.00	0.00	0.00	10,355.00	0.00	0.00	0.00	10,560.00
17	0.00	0.00	0.00	0.00	0.00	0.00	0.00	0.00	10,535.00	0.00	0.00	0.00	10,535.00
18	0.00	0.00	0.00	90.00	95.00	0.00	0.00	0.00	8,550.00	0.00	0.00	0.00	8,735.00
19	0.00	0.00	0.00	210.00	100.00	0.00	0.00	0.00	9,925.00	0.00	0.00	0.00	10,235.00
20	0.00	0.00	0.00	0.00	56.00	0.00	0.00	0.00	10,280.00	0.00	0.00	0.00	10,336.00
21	0.00	0.00	0.00	225.00	72.00	0.00	0.00	0.00	9,400.00	0.00	0.00	50.00	9,747.00
22	15.00	0.00	0.00	125.00	84.00	0.00	0.00	0.00	8,330.00	0.00	0.00	0.00	8,554.00
23	0.00	0.00	0.00	120.00	56.00	0.00	75.00	0.00	6,400.00	0.00	0.00	0.00	6,651.00